

PROPOSALS MAP

CRAVEN DISTRICT LOCAL PLAN (Outside the Yorkshire Dales National Park)

Adopted
July 1999

Approved by the District Council on the
25th November 1999
Approved by the Yorkshire Dales National Park
Committee on the 12th December 1999
Approved by the Secretary of State on the 15th
December 1999

The Proposals Map should be read in conjunction
with the Written Statement

Original Document Scale 1:63,360
This Scanned Image is Not To Scale

THE FOLLOWING POLICIES CONTAINED IN THE WRITTEN STATEMENT RELATE TO THE WHOLE OF THE PLAN AREA

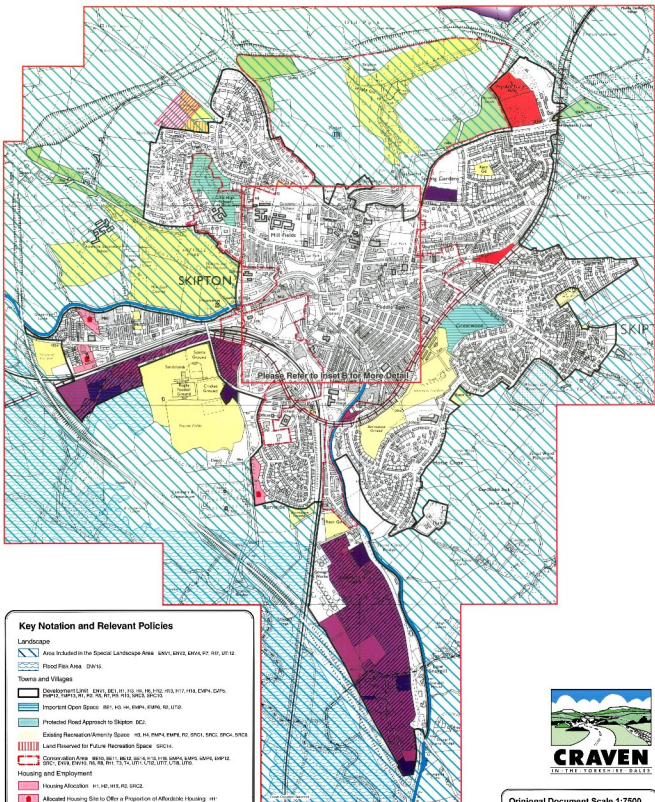
THE LOCAL ENVIRONMENT	THE REGIONAL ENVIRONMENT	THE NATIONAL ENVIRONMENT
EN1	EN1	EN1
EN2	EN2	EN2
EN3	EN3	EN3
EN4	EN4	EN4
EN5	EN5	EN5
EN6	EN6	EN6
EN7	EN7	EN7
EN8	EN8	EN8
EN9	EN9	EN9
EN10	EN10	EN10
EN11	EN11	EN11
EN12	EN12	EN12
EN13	EN13	EN13
EN14	EN14	EN14
EN15	EN15	EN15
EN16	EN16	EN16
EN17	EN17	EN17
EN18	EN18	EN18
EN19	EN19	EN19
EN20	EN20	EN20
EN21	EN21	EN21
EN22	EN22	EN22
EN23	EN23	EN23
EN24	EN24	EN24
EN25	EN25	EN25
EN26	EN26	EN26
EN27	EN27	EN27
EN28	EN28	EN28
EN29	EN29	EN29
EN30	EN30	EN30
EN31	EN31	EN31
EN32	EN32	EN32
EN33	EN33	EN33
EN34	EN34	EN34
EN35	EN35	EN35
EN36	EN36	EN36
EN37	EN37	EN37
EN38	EN38	EN38
EN39	EN39	EN39
EN40	EN40	EN40
EN41	EN41	EN41
EN42	EN42	EN42
EN43	EN43	EN43
EN44	EN44	EN44
EN45	EN45	EN45
EN46	EN46	EN46
EN47	EN47	EN47
EN48	EN48	EN48
EN49	EN49	EN49
EN50	EN50	EN50
EN51	EN51	EN51
EN52	EN52	EN52
EN53	EN53	EN53
EN54	EN54	EN54
EN55	EN55	EN55
EN56	EN56	EN56
EN57	EN57	EN57
EN58	EN58	EN58
EN59	EN59	EN59
EN60	EN60	EN60
EN61	EN61	EN61
EN62	EN62	EN62
EN63	EN63	EN63
EN64	EN64	EN64
EN65	EN65	EN65
EN66	EN66	EN66
EN67	EN67	EN67
EN68	EN68	EN68
EN69	EN69	EN69
EN70	EN70	EN70
EN71	EN71	EN71
EN72	EN72	EN72
EN73	EN73	EN73
EN74	EN74	EN74
EN75	EN75	EN75
EN76	EN76	EN76
EN77	EN77	EN77
EN78	EN78	EN78
EN79	EN79	EN79
EN80	EN80	EN80
EN81	EN81	EN81
EN82	EN82	EN82
EN83	EN83	EN83
EN84	EN84	EN84
EN85	EN85	EN85
EN86	EN86	EN86
EN87	EN87	EN87
EN88	EN88	EN88
EN89	EN89	EN89
EN90	EN90	EN90
EN91	EN91	EN91
EN92	EN92	EN92
EN93	EN93	EN93
EN94	EN94	EN94
EN95	EN95	EN95
EN96	EN96	EN96
EN97	EN97	EN97
EN98	EN98	EN98
EN99	EN99	EN99
EN100	EN100	EN100



Craven
In the Yorkshire Dales

Key Notation and Relevant Policies

Landscape	
	Areas of Outstanding Natural Beauty EN16, EN18, EN17, R17, R12, R13, R14, R15, R16, R17, R18, R19, R20, R21, R22, R23, R24, R25, R26, R27, R28, R29, R30, R31, R32, R33, R34, R35, R36, R37, R38, R39, R40, R41, R42, R43, R44, R45, R46, R47, R48, R49, R50, R51, R52, R53, R54, R55, R56, R57, R58, R59, R60, R61, R62, R63, R64, R65, R66, R67, R68, R69, R70, R71, R72, R73, R74, R75, R76, R77, R78, R79, R80, R81, R82, R83, R84, R85, R86, R87, R88, R89, R90, R91, R92, R93, R94, R95, R96, R97, R98, R99, R100
	Area Included in the Special Landscape Area EN15, EN16, EN17, R17, R12, R13, R14, R15, R16, R17, R18, R19, R20, R21, R22, R23, R24, R25, R26, R27, R28, R29, R30, R31, R32, R33, R34, R35, R36, R37, R38, R39, R40, R41, R42, R43, R44, R45, R46, R47, R48, R49, R50, R51, R52, R53, R54, R55, R56, R57, R58, R59, R60, R61, R62, R63, R64, R65, R66, R67, R68, R69, R70, R71, R72, R73, R74, R75, R76, R77, R78, R79, R80, R81, R82, R83, R84, R85, R86, R87, R88, R89, R90, R91, R92, R93, R94, R95, R96, R97, R98, R99, R100
	Flood Risk Area EN15
Nature Conservation	
	Sites of Special Scientific Interest EN16, EN18, EN19, EN20, EN21, EN22, EN23, EN24, EN25, EN26, EN27, EN28, EN29, EN30, EN31, EN32, EN33, EN34, EN35, EN36, EN37, EN38, EN39, EN40, EN41, EN42, EN43, EN44, EN45, EN46, EN47, EN48, EN49, EN50, EN51, EN52, EN53, EN54, EN55, EN56, EN57, EN58, EN59, EN60, EN61, EN62, EN63, EN64, EN65, EN66, EN67, EN68, EN69, EN70, EN71, EN72, EN73, EN74, EN75, EN76, EN77, EN78, EN79, EN80, EN81, EN82, EN83, EN84, EN85, EN86, EN87, EN88, EN89, EN90, EN91, EN92, EN93, EN94, EN95, EN96, EN97, EN98, EN99, EN100
	Conservation Area EN10, EN11, EN12, EN13, EN14, EN15, EN16, EN17, EN18, EN19, EN20, EN21, EN22, EN23, EN24, EN25, EN26, EN27, EN28, EN29, EN30, EN31, EN32, EN33, EN34, EN35, EN36, EN37, EN38, EN39, EN40, EN41, EN42, EN43, EN44, EN45, EN46, EN47, EN48, EN49, EN50, EN51, EN52, EN53, EN54, EN55, EN56, EN57, EN58, EN59, EN60, EN61, EN62, EN63, EN64, EN65, EN66, EN67, EN68, EN69, EN70, EN71, EN72, EN73, EN74, EN75, EN76, EN77, EN78, EN79, EN80, EN81, EN82, EN83, EN84, EN85, EN86, EN87, EN88, EN89, EN90, EN91, EN92, EN93, EN94, EN95, EN96, EN97, EN98, EN99, EN100
	Special, County Conservation Area EN1, EN2, EN3, EN4, EN5, EN6, EN7, EN8, EN9, EN10, EN11, EN12, EN13, EN14, EN15, EN16, EN17, EN18, EN19, EN20, EN21, EN22, EN23, EN24, EN25, EN26, EN27, EN28, EN29, EN30, EN31, EN32, EN33, EN34, EN35, EN36, EN37, EN38, EN39, EN40, EN41, EN42, EN43, EN44, EN45, EN46, EN47, EN48, EN49, EN50, EN51, EN52, EN53, EN54, EN55, EN56, EN57, EN58, EN59, EN60, EN61, EN62, EN63, EN64, EN65, EN66, EN67, EN68, EN69, EN70, EN71, EN72, EN73, EN74, EN75, EN76, EN77, EN78, EN79, EN80, EN81, EN82, EN83, EN84, EN85, EN86, EN87, EN88, EN89, EN90, EN91, EN92, EN93, EN94, EN95, EN96, EN97, EN98, EN99, EN100
Safeguard Land and Transport	
	Subsided Land for Road Scheme T1
	Protection of Railway Trackbeds and Infrastructure T2
	Leads - Liverpool Canal Corridor SAC11
	Scheduled Ancient Monument EN10, EN11, EN12, EN13, EN14, EN15, EN16, EN17, EN18, EN19, EN20, EN21, EN22, EN23, EN24, EN25, EN26, EN27, EN28, EN29, EN30, EN31, EN32, EN33, EN34, EN35, EN36, EN37, EN38, EN39, EN40, EN41, EN42, EN43, EN44, EN45, EN46, EN47, EN48, EN49, EN50, EN51, EN52, EN53, EN54, EN55, EN56, EN57, EN58, EN59, EN60, EN61, EN62, EN63, EN64, EN65, EN66, EN67, EN68, EN69, EN70, EN71, EN72, EN73, EN74, EN75, EN76, EN77, EN78, EN79, EN80, EN81, EN82, EN83, EN84, EN85, EN86, EN87, EN88, EN89, EN90, EN91, EN92, EN93, EN94, EN95, EN96, EN97, EN98, EN99, EN100
	Parks and Gardens of Special and Historic Interest BE1, BE2, BE3, BE4, BE5, BE6, BE7, BE8, BE9, BE10, BE11, BE12, BE13, BE14, BE15, BE16, BE17, BE18, BE19, BE20, BE21, BE22, BE23, BE24, BE25, BE26, BE27, BE28, BE29, BE30, BE31, BE32, BE33, BE34, BE35, BE36, BE37, BE38, BE39, BE40, BE41, BE42, BE43, BE44, BE45, BE46, BE47, BE48, BE49, BE50, BE51, BE52, BE53, BE54, BE55, BE56, BE57, BE58, BE59, BE60, BE61, BE62, BE63, BE64, BE65, BE66, BE67, BE68, BE69, BE70, BE71, BE72, BE73, BE74, BE75, BE76, BE77, BE78, BE79, BE80, BE81, BE82, BE83, BE84, BE85, BE86, BE87, BE88, BE89, BE90, BE91, BE92, BE93, BE94, BE95, BE96, BE97, BE98, BE99, BE100
Other	
	Plan Area Boundary
	Inset Map Area



Key Notation and Relevant Policies

Landscape

- Area Included in the Special Landscape Area: SWS1, SWS2, SWS4, R7, R17, UT12
- Flood Risk Area (SWS1)

Towns and Villages

- Development Limit: DN1, EC1, H1, T1, T12, H16, H12, H12, H14, DN4, DN5, DN12, DN13, H1, R2, R3, R4, R5, H13, SWS2, SWS3
- Important Open Space: IB1, H3, H4, SWS4, SWS6, R2, UT12
- Protected Flood Approach to Skipton: EC2
- Existing Recreation/Amenity Space: H3, H4, DN4, DN5, R2, SWS1, SWS2, SWS4, SWS5
- Land Reserved for Future Recreation Space: SWS14
- Conservation Area: SWS1, SWS11, SWS18, SWS19, SWS20, SWS21, SWS22, SWS23, SWS24, SWS25, SWS26, SWS27, SWS28, SWS29, SWS30, SWS31, SWS32, SWS33, SWS34, SWS35, SWS36, SWS37, SWS38, SWS39, SWS40, SWS41, SWS42, SWS43, SWS44, SWS45, SWS46, SWS47, SWS48, SWS49, SWS50, SWS51, SWS52, SWS53, SWS54, SWS55, SWS56, SWS57, SWS58, SWS59, SWS60, SWS61, SWS62, SWS63, SWS64, SWS65, SWS66, SWS67, SWS68, SWS69, SWS70, SWS71, SWS72, SWS73, SWS74, SWS75, SWS76, SWS77, SWS78, SWS79, SWS80, SWS81, SWS82, SWS83, SWS84, SWS85, SWS86, SWS87, SWS88, SWS89, SWS90, SWS91, SWS92, SWS93, SWS94, SWS95, SWS96, SWS97, SWS98, SWS99, SWS100

Housing and Employment

- Housing Allocation: H1, H2, H3, R2, SWS2
- Allocated Housing Site to Offer a Proportion of Affordable Housing: H1
- Existing Housing Commitment: H1
- Site for Employment Use/Reduction of Lapsed Consents: DN1, DN2, R2, R7
- Existing Employment Commitment: DN1, DN2, R7
- Established Industrial Area: DN4, DN5, R7

Safeguard Land and Transport

- Protection of Railway Tracksides and Infrastructure: T7
- Leeds - Liverpool Canal Corridor: SWS1
- Scheduled Ancient Monument: DN12, DN13, DN14, H3, H4, H5, H6, H7, H12, H13, H14, H15, H16, SWS1, SWS2, SWS3, SWS4, SWS5, SWS6, SWS7, SWS8, SWS9, SWS10, SWS11, R2, R3, R4, R5, R6, R7, R8, SWS1, SWS2, SWS3, SWS4, SWS5, SWS6, SWS7, SWS8, SWS9, SWS10, SWS11, T1, UT11, UT12, UT13, UT14, UT15, UT16, UT17, UT18
- Land Reserved for Educational Purposes: SWS13

Other

- Plan Area Boundary
- Inset Map Area



Original Document Scale 1:7500
This Scanned Image is Not To Scale

INSET MAP A SKIPTON

CRAVEN DISTRICT LOCAL PLAN
(Outside the Yorkshire Dales National Park)

Adopted
July 1999

Food plan for Craven District Council
the publication of the Craven District
Local Plan - Craven District Council
Copyright Reserved
Copyright © Craven District Council, 1999



Inset Maps should be read in conjunction with the Written Statement



INSET MAP B SKIPTON TOWN CENTRE

Craven District Local Plan
(Outside the Yorkshire Dales National Park)

Adopted
July 1999

Printed at the Craven District Council Offices
14, Lawrence House Road
R. Skipton, Gargrave, Craven
GK7 0AE (01549 522100)



Inset Maps should be read in conjunction with the Written Statement

Original Document Scale 1: 2500
This Scanned Image is Not To Scale

Key Notation and Relevant Policies

Landscape

- Area of Outstanding Natural Beauty: ENO, EMP1, EMP7, EMP18, R1, R7, SRCL, SRCL2, SRCL3, TS, UT1, UT2, UT3, UT18
- Area Included in the Special Landscape Area: DN1, DN5, DN6, DN7, DN9, DN12
- Flood Risk Area: ENF15

Towns and Villages

- Development Limit: EN1, EN2, EN3, EN4, EN5, EN6, EN7, EN8, EN9, EN10, EN11, EN12, EN13, EN14, EN15, EN16, EN17, EN18, EN19, EN20, EN21, EN22, EN23, EN24, EN25, EN26, EN27, EN28, EN29, EN30, EN31, EN32, EN33, EN34, EN35, EN36, EN37, EN38, EN39, EN40, EN41, EN42, EN43, EN44, EN45, EN46, EN47, EN48, EN49, EN50, EN51, EN52, EN53, EN54, EN55, EN56, EN57, EN58, EN59, EN60, EN61, EN62, EN63, EN64, EN65, EN66, EN67, EN68, EN69, EN70, EN71, EN72, EN73, EN74, EN75, EN76, EN77, EN78, EN79, EN80, EN81, EN82, EN83, EN84, EN85, EN86, EN87, EN88, EN89, EN90, EN91, EN92, EN93, EN94, EN95, EN96, EN97, EN98, EN99, EN100
- Important Open Space: EN1, EN2, EN3, EN4, EN5, EN6, EN7, EN8, EN9, EN10, EN11, EN12, EN13, EN14, EN15, EN16, EN17, EN18, EN19, EN20, EN21, EN22, EN23, EN24, EN25, EN26, EN27, EN28, EN29, EN30, EN31, EN32, EN33, EN34, EN35, EN36, EN37, EN38, EN39, EN40, EN41, EN42, EN43, EN44, EN45, EN46, EN47, EN48, EN49, EN50, EN51, EN52, EN53, EN54, EN55, EN56, EN57, EN58, EN59, EN60, EN61, EN62, EN63, EN64, EN65, EN66, EN67, EN68, EN69, EN70, EN71, EN72, EN73, EN74, EN75, EN76, EN77, EN78, EN79, EN80, EN81, EN82, EN83, EN84, EN85, EN86, EN87, EN88, EN89, EN90, EN91, EN92, EN93, EN94, EN95, EN96, EN97, EN98, EN99, EN100
- Existing Recreation/Amenity Space: EN1, EN2, EN3, EN4, EN5, EN6, EN7, EN8, EN9, EN10, EN11, EN12, EN13, EN14, EN15, EN16, EN17, EN18, EN19, EN20, EN21, EN22, EN23, EN24, EN25, EN26, EN27, EN28, EN29, EN30, EN31, EN32, EN33, EN34, EN35, EN36, EN37, EN38, EN39, EN40, EN41, EN42, EN43, EN44, EN45, EN46, EN47, EN48, EN49, EN50, EN51, EN52, EN53, EN54, EN55, EN56, EN57, EN58, EN59, EN60, EN61, EN62, EN63, EN64, EN65, EN66, EN67, EN68, EN69, EN70, EN71, EN72, EN73, EN74, EN75, EN76, EN77, EN78, EN79, EN80, EN81, EN82, EN83, EN84, EN85, EN86, EN87, EN88, EN89, EN90, EN91, EN92, EN93, EN94, EN95, EN96, EN97, EN98, EN99, EN100
- Green Belt: EN1, EN2, EN3, EN4, EN5, EN6, EN7, EN8, EN9, EN10, EN11, EN12, EN13, EN14, EN15, EN16, EN17, EN18, EN19, EN20, EN21, EN22, EN23, EN24, EN25, EN26, EN27, EN28, EN29, EN30, EN31, EN32, EN33, EN34, EN35, EN36, EN37, EN38, EN39, EN40, EN41, EN42, EN43, EN44, EN45, EN46, EN47, EN48, EN49, EN50, EN51, EN52, EN53, EN54, EN55, EN56, EN57, EN58, EN59, EN60, EN61, EN62, EN63, EN64, EN65, EN66, EN67, EN68, EN69, EN70, EN71, EN72, EN73, EN74, EN75, EN76, EN77, EN78, EN79, EN80, EN81, EN82, EN83, EN84, EN85, EN86, EN87, EN88, EN89, EN90, EN91, EN92, EN93, EN94, EN95, EN96, EN97, EN98, EN99, EN100
- Core Retail Area: EN1, EN2, EN3, EN4, EN5, EN6, EN7, EN8, EN9, EN10, EN11, EN12, EN13, EN14, EN15, EN16, EN17, EN18, EN19, EN20, EN21, EN22, EN23, EN24, EN25, EN26, EN27, EN28, EN29, EN30, EN31, EN32, EN33, EN34, EN35, EN36, EN37, EN38, EN39, EN40, EN41, EN42, EN43, EN44, EN45, EN46, EN47, EN48, EN49, EN50, EN51, EN52, EN53, EN54, EN55, EN56, EN57, EN58, EN59, EN60, EN61, EN62, EN63, EN64, EN65, EN66, EN67, EN68, EN69, EN70, EN71, EN72, EN73, EN74, EN75, EN76, EN77, EN78, EN79, EN80, EN81, EN82, EN83, EN84, EN85, EN86, EN87, EN88, EN89, EN90, EN91, EN92, EN93, EN94, EN95, EN96, EN97, EN98, EN99, EN100
- Article 4 Direction Area: EN1, EN2, EN3, EN4, EN5, EN6, EN7, EN8, EN9, EN10, EN11, EN12, EN13, EN14, EN15, EN16, EN17, EN18, EN19, EN20, EN21, EN22, EN23, EN24, EN25, EN26, EN27, EN28, EN29, EN30, EN31, EN32, EN33, EN34, EN35, EN36, EN37, EN38, EN39, EN40, EN41, EN42, EN43, EN44, EN45, EN46, EN47, EN48, EN49, EN50, EN51, EN52, EN53, EN54, EN55, EN56, EN57, EN58, EN59, EN60, EN61, EN62, EN63, EN64, EN65, EN66, EN67, EN68, EN69, EN70, EN71, EN72, EN73, EN74, EN75, EN76, EN77, EN78, EN79, EN80, EN81, EN82, EN83, EN84, EN85, EN86, EN87, EN88, EN89, EN90, EN91, EN92, EN93, EN94, EN95, EN96, EN97, EN98, EN99, EN100

Housing and Employment

- Housing Allocation: H1, H2, H3, H4, H5, H6, H7, H8, H9, H10, H11, H12, H13, H14, H15, H16, H17, H18, H19, H20, H21, H22, H23, H24, H25, H26, H27, H28, H29, H30, H31, H32, H33, H34, H35, H36, H37, H38, H39, H40, H41, H42, H43, H44, H45, H46, H47, H48, H49, H50, H51, H52, H53, H54, H55, H56, H57, H58, H59, H60, H61, H62, H63, H64, H65, H66, H67, H68, H69, H70, H71, H72, H73, H74, H75, H76, H77, H78, H79, H80, H81, H82, H83, H84, H85, H86, H87, H88, H89, H90, H91, H92, H93, H94, H95, H96, H97, H98, H99, H100
- Allocated Housing Site to Offer a Proportion of Affordable Housing: H11
- Existing Housing Commitment: H1
- Existing Employment Commitment: EMP1, EMP2, EMP3, EMP4, EMP5, EMP6, EMP7, EMP8, EMP9, EMP10, EMP11, EMP12, EMP13, EMP14, EMP15, EMP16, EMP17, EMP18, EMP19, EMP20, EMP21, EMP22, EMP23, EMP24, EMP25, EMP26, EMP27, EMP28, EMP29, EMP30, EMP31, EMP32, EMP33, EMP34, EMP35, EMP36, EMP37, EMP38, EMP39, EMP40, EMP41, EMP42, EMP43, EMP44, EMP45, EMP46, EMP47, EMP48, EMP49, EMP50, EMP51, EMP52, EMP53, EMP54, EMP55, EMP56, EMP57, EMP58, EMP59, EMP60, EMP61, EMP62, EMP63, EMP64, EMP65, EMP66, EMP67, EMP68, EMP69, EMP70, EMP71, EMP72, EMP73, EMP74, EMP75, EMP76, EMP77, EMP78, EMP79, EMP80, EMP81, EMP82, EMP83, EMP84, EMP85, EMP86, EMP87, EMP88, EMP89, EMP90, EMP91, EMP92, EMP93, EMP94, EMP95, EMP96, EMP97, EMP98, EMP99, EMP100
- Established Industrial Area: EMP1, EMP2, EMP3, EMP4, EMP5, EMP6, EMP7, EMP8, EMP9, EMP10, EMP11, EMP12, EMP13, EMP14, EMP15, EMP16, EMP17, EMP18, EMP19, EMP20, EMP21, EMP22, EMP23, EMP24, EMP25, EMP26, EMP27, EMP28, EMP29, EMP30, EMP31, EMP32, EMP33, EMP34, EMP35, EMP36, EMP37, EMP38, EMP39, EMP40, EMP41, EMP42, EMP43, EMP44, EMP45, EMP46, EMP47, EMP48, EMP49, EMP50, EMP51, EMP52, EMP53, EMP54, EMP55, EMP56, EMP57, EMP58, EMP59, EMP60, EMP61, EMP62, EMP63, EMP64, EMP65, EMP66, EMP67, EMP68, EMP69, EMP70, EMP71, EMP72, EMP73, EMP74, EMP75, EMP76, EMP77, EMP78, EMP79, EMP80, EMP81, EMP82, EMP83, EMP84, EMP85, EMP86, EMP87, EMP88, EMP89, EMP90, EMP91, EMP92, EMP93, EMP94, EMP95, EMP96, EMP97, EMP98, EMP99, EMP100

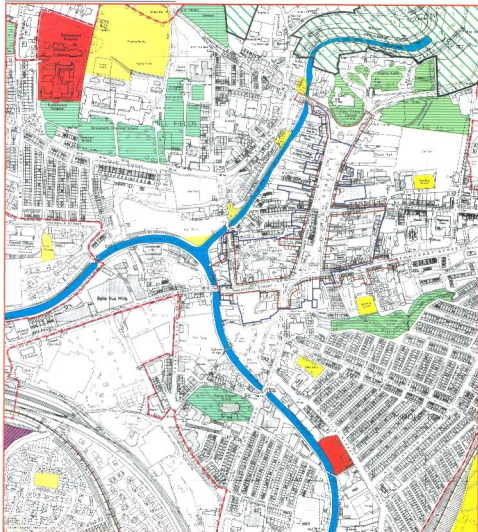
Safeguard Land and Transport

- Protection of Railway Trackbeds and Infrastructure: TR1, TR2, TR3, TR4, TR5, TR6, TR7, TR8, TR9, TR10, TR11, TR12, TR13, TR14, TR15, TR16, TR17, TR18, TR19, TR20, TR21, TR22, TR23, TR24, TR25, TR26, TR27, TR28, TR29, TR30, TR31, TR32, TR33, TR34, TR35, TR36, TR37, TR38, TR39, TR40, TR41, TR42, TR43, TR44, TR45, TR46, TR47, TR48, TR49, TR50, TR51, TR52, TR53, TR54, TR55, TR56, TR57, TR58, TR59, TR60, TR61, TR62, TR63, TR64, TR65, TR66, TR67, TR68, TR69, TR70, TR71, TR72, TR73, TR74, TR75, TR76, TR77, TR78, TR79, TR80, TR81, TR82, TR83, TR84, TR85, TR86, TR87, TR88, TR89, TR90, TR91, TR92, TR93, TR94, TR95, TR96, TR97, TR98, TR99, TR100
- Leads - Liverpool Canal Corridor: SNC1
- Scheduled Ancient Monument: EN1, EN2, EN3, EN4, EN5, EN6, EN7, EN8, EN9, EN10, EN11, EN12, EN13, EN14, EN15, EN16, EN17, EN18, EN19, EN20, EN21, EN22, EN23, EN24, EN25, EN26, EN27, EN28, EN29, EN30, EN31, EN32, EN33, EN34, EN35, EN36, EN37, EN38, EN39, EN40, EN41, EN42, EN43, EN44, EN45, EN46, EN47, EN48, EN49, EN50, EN51, EN52, EN53, EN54, EN55, EN56, EN57, EN58, EN59, EN60, EN61, EN62, EN63, EN64, EN65, EN66, EN67, EN68, EN69, EN70, EN71, EN72, EN73, EN74, EN75, EN76, EN77, EN78, EN79, EN80, EN81, EN82, EN83, EN84, EN85, EN86, EN87, EN88, EN89, EN90, EN91, EN92, EN93, EN94, EN95, EN96, EN97, EN98, EN99, EN100
- Land Reserved for Educational Purposes: SNC1

Other

- Plan Area Boundary
- Inset Map Area

INSET MAP B: SKIPTON TOWN CENTRE Scale 1:2500



INSET MAP C SETTLE AND GIGGLESWICK

CRAYEN DISTRICT LOCAL PLAN
(Outside the Yorkshire Dales National Park)

Adopted
July 1999

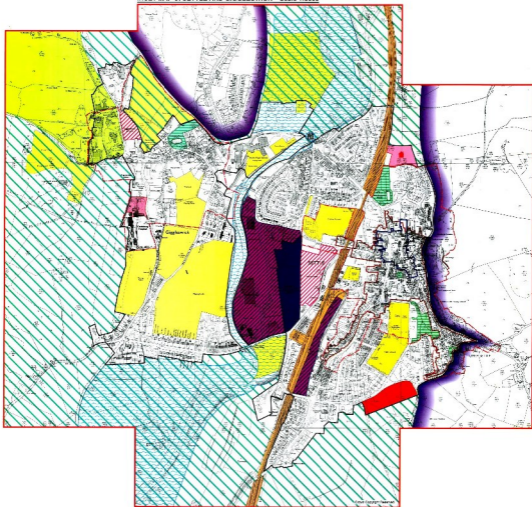
Filed with the Ordnance Survey map with
the permission of the Controller of
the Gazette under the Office
of the Geographical Names
Commission (LA 87/029)



Original Document Scale 1:5000
This Scanned Image is Not To Scale

Inset Maps should be read in conjunction with the Written Statement

INSET MAP C: SETTLE AND GIGGLESWICK Scale 1:5000



Key Notation and Relevant Policies

Landscape

Area of Outstanding Natural Beauty: ENO, EMP6, EMP7, EMP8, RT, R17, SPCA, SMO, SMO2, T3, U11, U12, U13, U16

Area Included in the Special Landscape Area: SMO1, SMO2, SMO4, R1, R17, U11, U12

Flood Risk Area: SMO5

Towns and Villages

Development Limit: P0Y1, BCL1, H1, H2, H3, H4, H5, H6, H7, H8, H9, H10, SPO3, SPO10

Important Open Space: SMO, H3, H4, SMO4, SMO6, H2, U10

Existing Recreational/Open Space: H3, H4, SMO4, SMO6, R4, SPO3, SPO4, SPO5, SPO6

Conservation Area: SPO1, SPO2, SPO3, SPO4, SPO5, SPO6, SPO7, SPO8, SPO9, R6, R11, T3, T4, U11, U12, U13, U16, U18

Semi - Corridor Conservation Area: SMO1, SMO2, SMO3, SMO4, SMO5, SMO6, SMO7, SMO8, SMO9, R6, R11, T3, T4, U11, U12, U13, U16, U18

Core Retail Area: H17, H18, H20, SPO12, R1, R2, R3, R14, T3, T4

Article 4 Direction Area: SMO1

Housing and Employment

Housing Allocation: H1, H2, H10, H2, SPO2

Allocated Housing Site to Offer a Proportion of Affordable Housing: H11

Existing Housing Commitment: H1

Existing Employment Commitment: SMO4, SMO5, H1

Established Industrial Area: SMO4, SMO5, H1

Safeguard Land and Transport

Protection of Railway Tracks and Infrastructure: T1

Leads - Waterpool Canal Corridor: SMO11

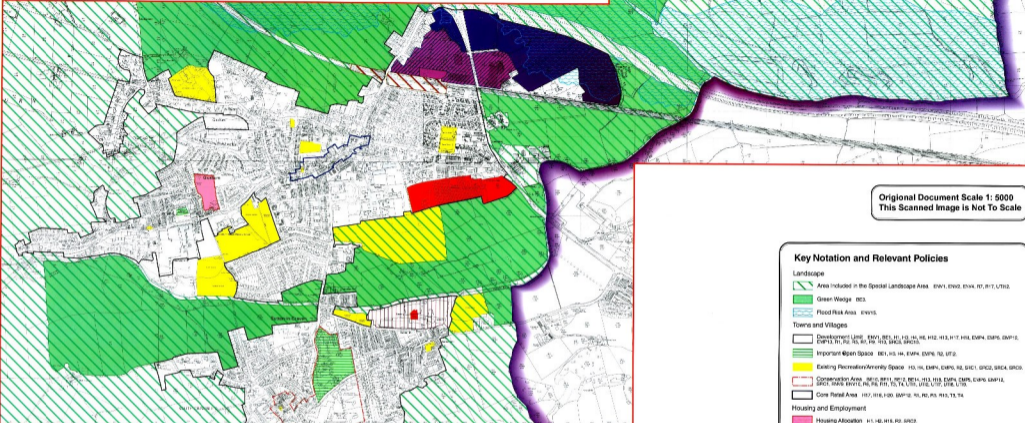
Scheduled Ancient Monument: SMO12, SMO13, SMO14, SMO15, H3, H4, H5, H6, H7, H8, H9, H10, H11, H12, H13, H14, H15, SMO4, SMO5, SMO6, SMO7, SMO8, SMO9, SMO10, SMO11, SMO12, SMO13, SMO14, SMO15, R6, R11, T3, T4, U11, U12, U13, U16, U18

Land Reserved for Educational Purposes: SPO10

Other

Plan Area Boundary

Inset Map Area



Original Document Scale 1: 5000
This Screened Image is Not To Scale

INSET MAP D
SUTTON AND GLUSBURN

CRAVEN DISTRICT LOCAL PLAN
(Outside the Yorkshire Dales National Park)

Adopted
July 1999

Prepared for Craven District Council by
the members of the Council of
the Strategic Planning Office
New Craven Park
Craven, North Yorkshire

Inset Maps should be read in conjunction with the Written Statement

Key Notation and Relevant Policies

Landscape

- Area Included in the Special Landscape Area. ENVI, ENO2, ENVA, RT, R17, U102.
- Green Wedge. GCS.
- Flood Risk Area. ENVI.

Towns and Villages

- Development Limit. ENVI, BE1, H1, H3, H4, H6, H12, H13, H17, H18, EMPA, EMPI, EMPI2, EMPI3, TI, P2, R2, R4, R9, R12, SDCA, SDC2.
- Important Open Space. BE1, H3, H4, EMPA, EMPI, R2, U12.
- Existing Recreation/Amenity Space. H3, H4, EMPA, EMPI, R2, SDC1, SDC2, SDCA, SDC3.
- Conservation Area. BE12, BE13, BE14, BE15, H13, H18, EMPA, EMPI, EMPI2, EMPI3, SDCA, SDC12, H4, H6, H12, H3, T4, U15, U16, U17, U18, U19.
- Core Retail Area. H17, H18, P20, SDC12, H4, R2, H13, T4, T4.

Housing and Employment

- Housing Allocation. H1, H4, H18, R2, SDC3.
- Existing Housing Commitment. H1.
- Site for Mixed Housing and Employment Use to Offer a Proportion of Affordable Housing. SDC1, SDC3, H4.
- Site for Employment Use/Retention of Licensed Concessions. SDC1, SDC3, R2, R7.
- Existing Employment Commitment. SDC1, SDC2, R7.
- Established Industrial Area. EMPI, EMPI2, R7.

Safeguard Land and Transport

- Leeds - Liverpool Canal Corridor. SDC11.
- Site of Crosshills Railway Station. R2.

Other

- Plan Area Boundary
- Inset Map Area

